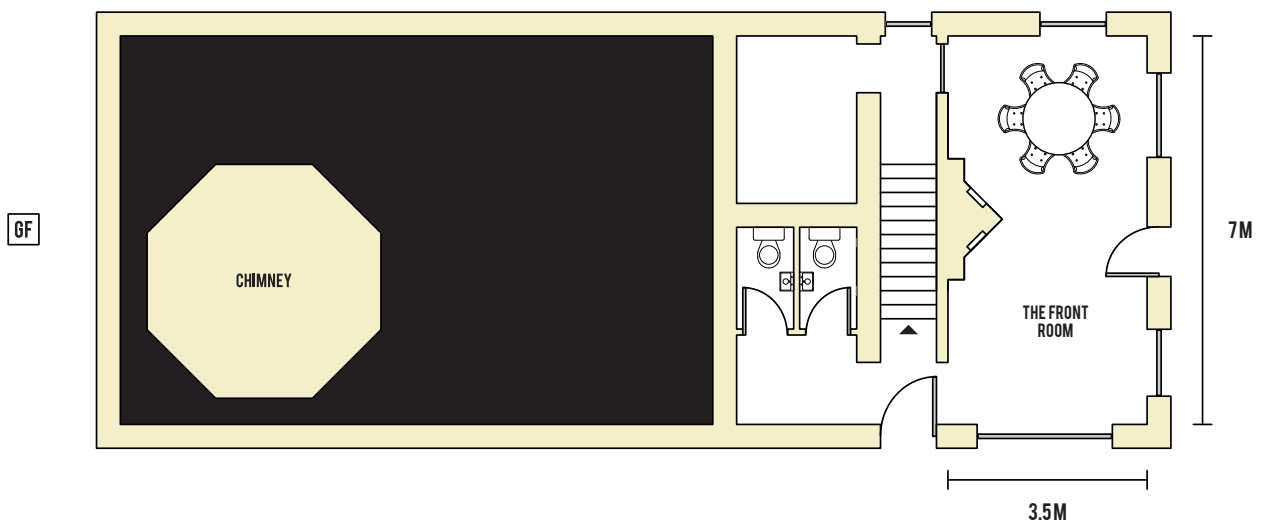
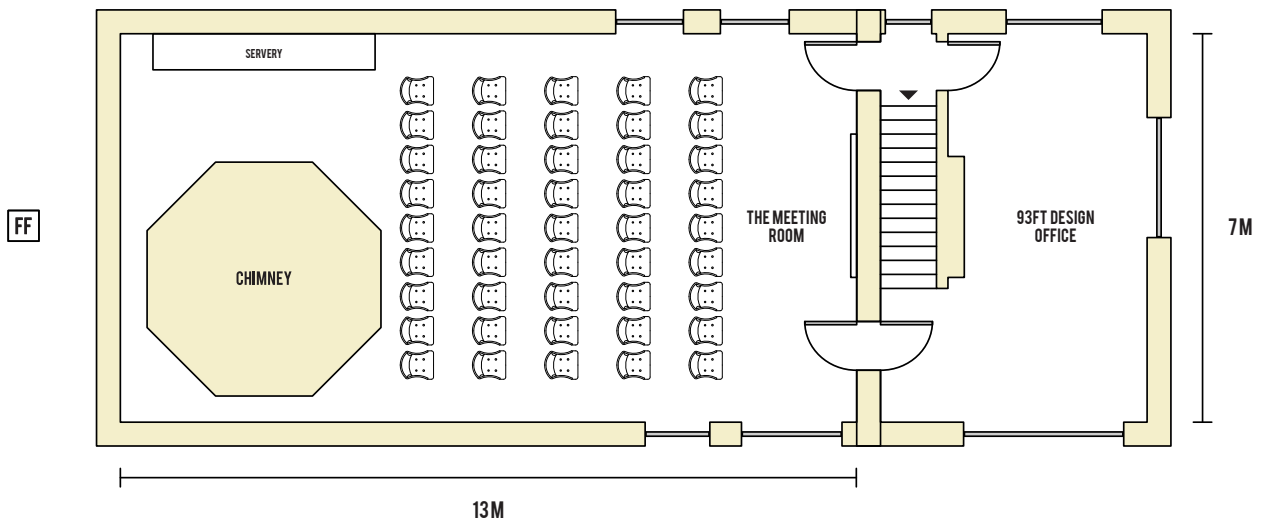


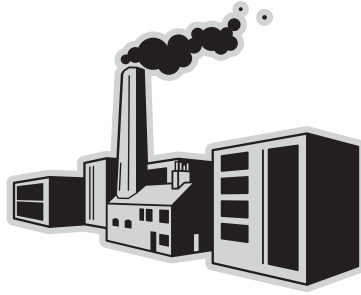
# THE CHIMNEY HOUSE

KELHAM ISLAND

## FLOOR PLAN : THEATRE STYLE

THE MEETING ROOM CAN ACCOMMODATE UP TO SEATED 45 - 50, OR STANDING 60 - 70



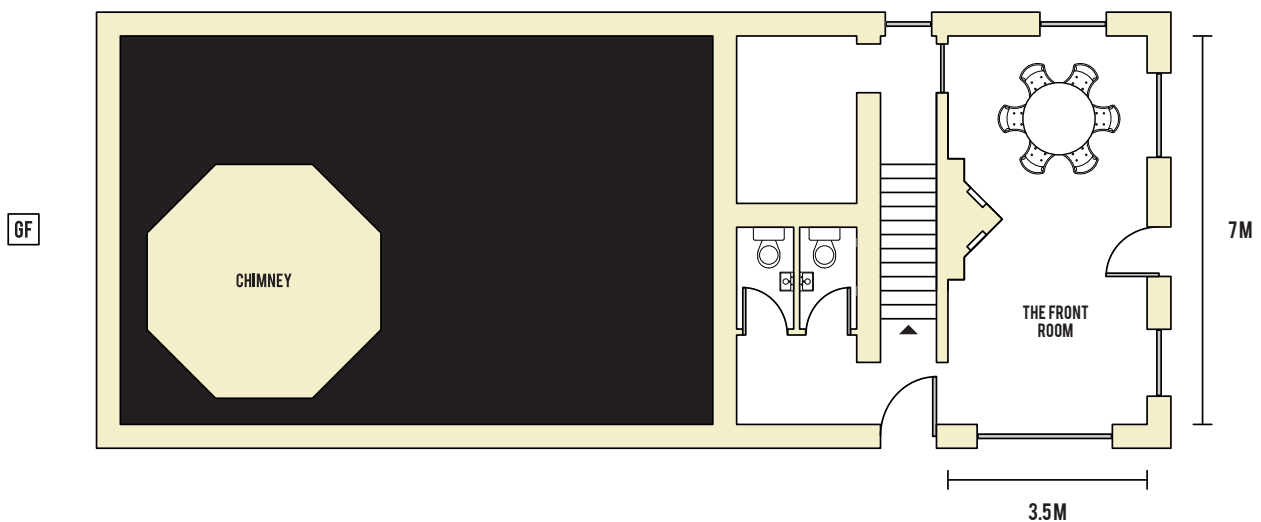
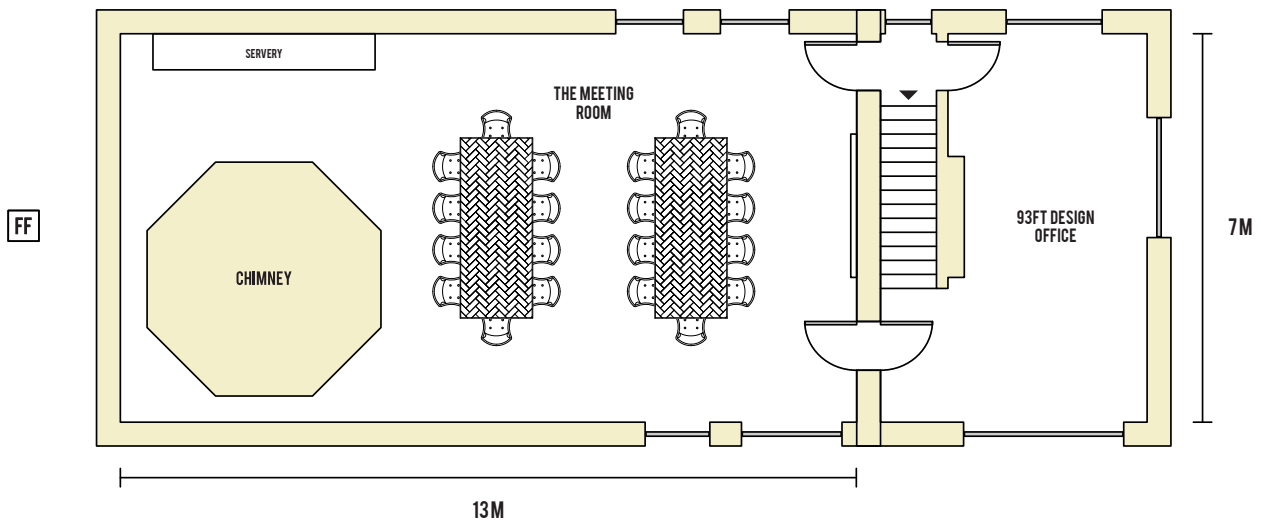


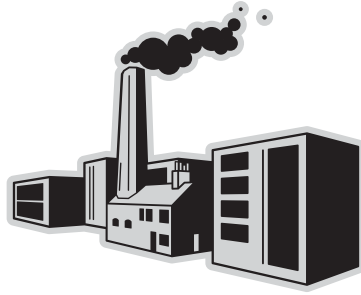
# THE CHIMNEY HOUSE

KELHAM ISLAND

## FLOOR PLAN : TWIN TABLE

THE MEETING ROOM CAN ACCOMMODATE UP TO SEATED 20 - 30, WITH ADDITIONAL SEATS IF REQUIRED





# THE CHIMNEY HOUSE

KELHAM ISLAND

## FLOOR PLAN : BOARDROOM

THE MEETING ROOM CAN ACCOMMODATE UP TO SEATED 22, WITH ADDITIONAL SEATS IF REQUIRED

